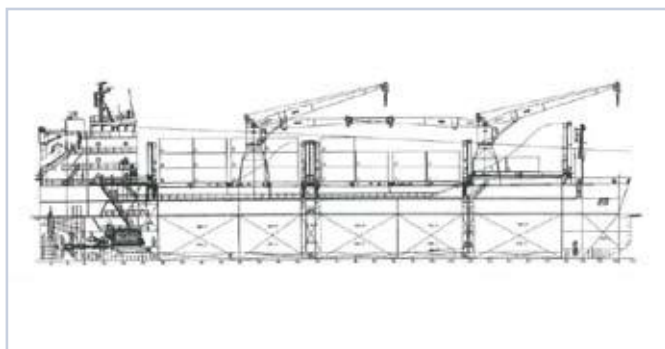




MV Western Carrier

Sistervessels: MV Western Cruiser/ MV Western Island / MV Western Steamer / MV European Voyager / MV European Trader / MV European Hawk / MV European Wave



Builders: Zhejiang Zhenyu
Type: 9.000 DWT – Multi Purpose Bulk Vessel

Classification: GL 100 A5 E3 G, Equipped for carriage of containers and heavy cargo, SOLAS II-2, Reg. 19, MC E3 AUT

PRINCIPAL PARTICULARS:

Length OA: 107,00 m
Length BP: 103,00 m
Breadth: 18,20 m
Draught: 7,10 m
GT: 6.850
NT: 3.500
Deadweight: 9.500 mt

Hatches:

3 Holds, 3 Hatches, Tweendeck
No. 1: 16,10 m x 15,20 m
No. 2: 25,90 m x 15,20 m
No. 3: 25,90 m x 15,20 m

Cargo cap. Grain: 11.770 cbm
Cargo cap. Bale: 11.770 cbm

<u>TIMBER CAPACITY</u>	0,55t/m ³ Weight Factor
in hold	abt. 4.865 t › 8.850 m ³
on deck	abt. 1.760 t › 3.200 m ³ (with 3,5 tiers)
Total	abt. 6.625 t › 12.050 m ³

Main Engine:

MAK 8M 32C with 3.840 kW at 600 rpm
Controllable pitch propeller with reduction gear

Speed: 13,0 kn

Aux. Engines:

2 MAN D 2842 LE with 399 kW at 1.500 rpm
1 Emergency-Generator MAN D 0824LE 201 with 92 kW at 1.500 rpm
1 Shaft-Generator with 500 kW
1 Bowthruster with 450 kW

Cranes: 2 x NMF 60t / 14m

Equipment: Air conditioning, 2 Radars, Gyro compass, Voyage Data Recorder, Echo sounder, Navtex receiver (Inmarsat C)